

# Zeus

## Diagnostic ultrasound system For General practitioner ultrasound



For a General Practitioner (GP), ultrasound serves as a valuable diagnostic tool for a wide range of medical conditions. An ultrasound system with an intuitive user interface and easy-to-use features is essential to ensure a quick and aimed workflow. This ensures to quickly perform scans and interpret results without extensive training. A system with versatile capabilities, so you can expand your skills into abdominal, vascular, small parts, musculoskeletal ultrasound and more. A seamless integration with EHR systems allows you to store and access ultrasound images and reports efficiently. This streamlines the workflow and ensures comprehensive patient records. This is MX7. Portability with its lightweight design for home visits is also a feature that should not be unrecognized.

### Simplifying ultrasound with ZST+

focused on your patient and not where the focus is. Zeus has a pixel by pixel focus, where always the whole image is automatically focused.



### Transducer solutions for GP

Be



1-6 MHz



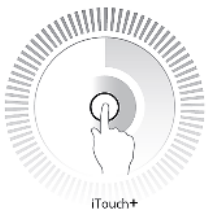
3-13 MHz

### Focused on diagnostic imaging



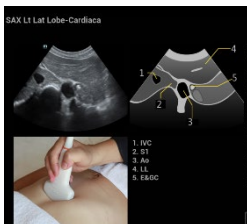
Fullscreen Mode iZoom let you concentrate on the picture and not on the information around.

### Ease of use with intuitive user interface iTouch



In a preset the most common settings are saved. However patients can differ and therefore settings need to be adjusted. iTouch automatically adjust to the current situation by one keystroke.

### Learning tutorial on board iScan Helper



Zeus is featured with a tutorial on the system that support you to learn and train ultrasound. With dual screen function you can live refer to a reference image and elevate your ultrasound skills.

### Easily save images into your EHR



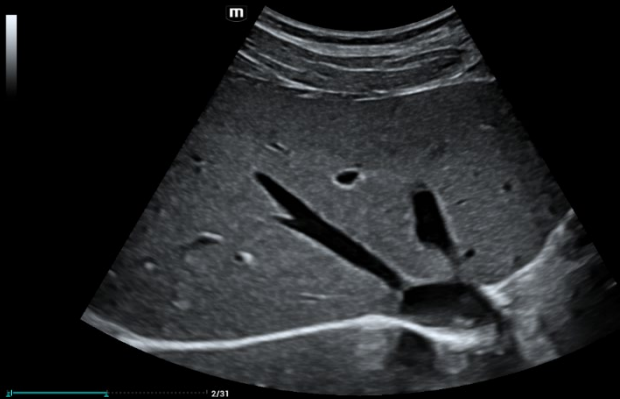
Saving images easily with network storage to a computer / server location or with DICOM to an Electronic Health Record (EHR). Zeus can support with this services and even more.



**mindray**

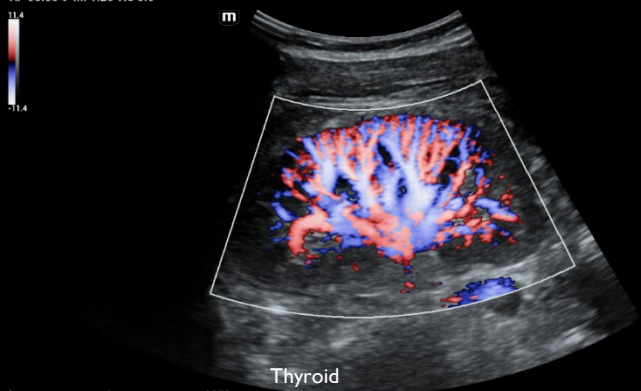
Liver in B-Mode with ZST+ pixel by pixel focused

AP 93.33% MI 1.36 TIS 0.3



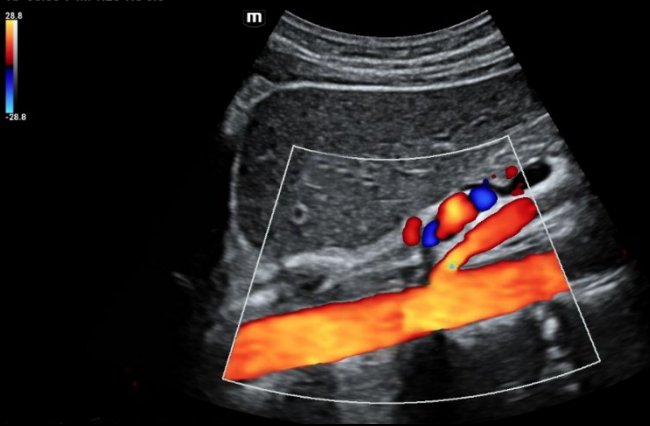
Renal perfusion

AP 93.33% MI 1.26 TIS 0.6



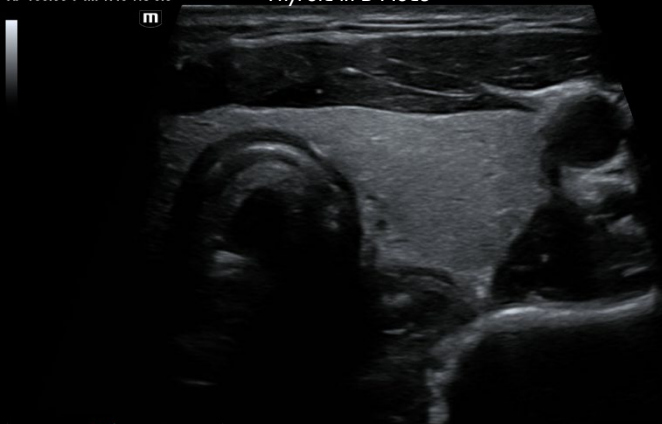
Aorta with AMS in color mode

AP 93.33% MI 1.26 TIS 0.5



Thyroid in B-Mode

AP 100.00% MI 1.40 TIS 0.3



## Lighten Up infinite possibilities

Convenient probe and cable management



Preventive anti-collision design

Comfortable storage solutions

Slim "X"-ultra small chassis

Vibration reducing caster

### Ergonomic features



- Preventive magnetic power plug
- Comfortable Centric user interface layout
- Expanding probe extender

### M-Secure



# mindray